

Coastal Management Program

Our coastline is one of our region's most valuable natural assets. The Coastal Management Program (CMP) is a long-term plan to help guide how we protect, use and manage our coast over the next 10 years and beyond.

It will help us balance:

- Planning and development in the coastal zone
- Coastal processes, coastal hazards and climate risks
- Public access to, and recreational enjoyment of, the coast
- The coastal environment and cultural values
- Economic activities reliant on the coast

AT A GLANCE

A CMP:

- Is required by the NSW Government
- Is prepared by Council
- Identifies coastal values and risks
- Sets priorities and actions
- Guides future coastal management



Why do we need a CMP?

Our coast is always changing. Coastal storms, beach erosion, coastal inundation and tidal inundation all affect how our coastline looks and functions over time.

Under the NSW Coastal Management Act 2016, coastal councils are required to prepare a CMP to help manage the coast in a sustainable and coordinated way.

Once certified by the NSW Government, a CMP helps Council:

- Plan for future coastal challenges
- Coordinate long-term coastal management
- Access State Government funding for priority coastal projects.

How is the CMP developed?

The CMP is developed through a five-stage process set by the NSW Government. This process helps make sure the plan is informed by evidence, community input and technical studies.

The five stages are:



Helpful terms

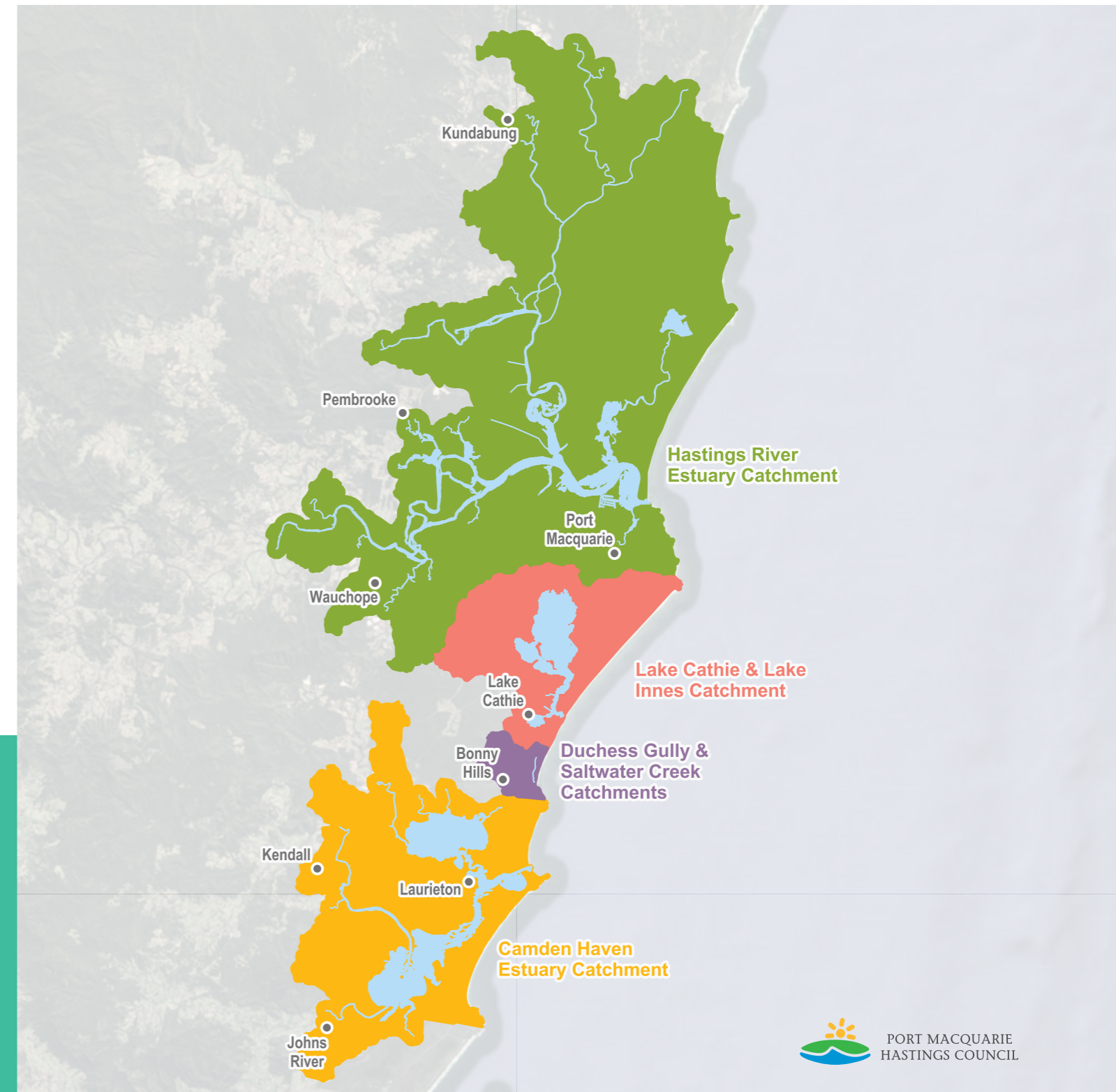
- **Beach erosion:** Sand is removed from beaches and dunes by the action of wind, waves and high ocean water levels.
- **Shoreline recession:** The gradual landward movement of the shoreline due to ongoing sand loss.
- **Coastal inundation:** Ocean waves and water temporarily travel onto foreshore land during storm events.
- **Tidal inundation:** Normally dry low-lying land is covered by ocean water during high or king tides.

What area does the CMP cover?

The CMP covers coastal and estuarine areas across our region, including:

- The Hastings River estuary
- Camden Haven estuary
- Lake Cathie, Lake Innes and Bonny Hills estuaries
- Our beaches, dunes, cliffs and headlands along the open coastline.

It focuses on the places people value and use, and how coastal processes such as beach erosion and coastal and tidal inundation may affect them over time.





What does the CMP focus on?

Planning & Development

Supporting sustainable land use and resilient development while adapting to coastal risks.



Access & Recreation

Ensuring everyone can safely enjoy the coast now and into the future.



Environment & Cultural Heritage

Protecting coastal ecosystems, improving water quality, and recognising cultural heritage and First Nations values.



Coastal Economy

Supporting tourism and coastal industries that rely on healthy, resilient coastal environments.



Leadership & Collaboration

Working together to plan for a changing coastline.



More information can be found on our website at pmhc.nsw.gov.au/CMP